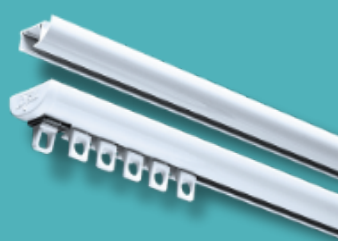


A GUIDE TO MEASURING CURTAINS

Use a metal tape measure for better accuracy to get those exact dimensions right!



STEP 1 - TRACK OR POLE

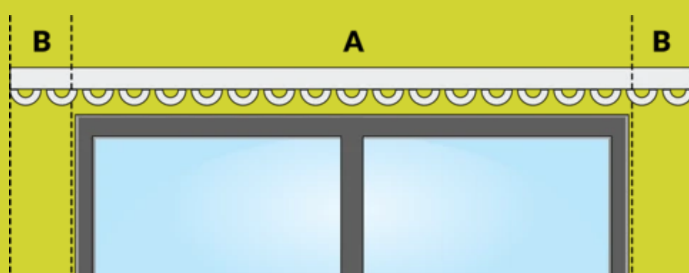
If you don't already have a track or pole in place, please measure from the height you desire the pole or track to be placed.

Measure the width of the window and add **300-400mm**, this will ensure your curtains will fit comfortably cover your window. Fit your track or pole approximately **150mm** above your window and ensure you have **150-200mm** on either side of the window

STEP 2 - MEASURE TRACK/POLE

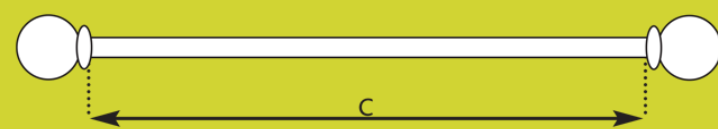
Curtain Track:

Measure its full length, end to end. From left to right (**B - B**) on diagram shown.



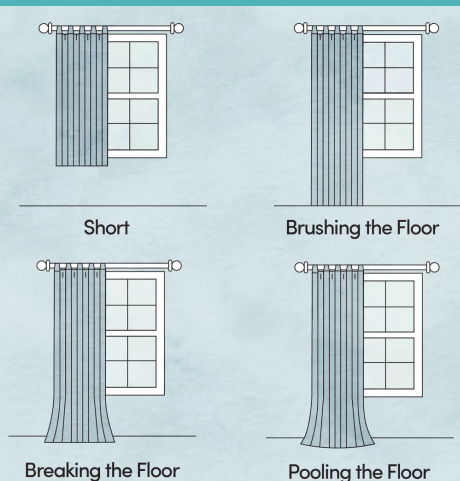
Curtain Pole:

Measure the pole length, not including the end caps (the decorative pieces on the end).



STEP 3 - MEASURE CURTAIN LENGTH

Measure the distance from the track or pole to your desired curtain length. Please note, If you have a wall mounted heater below your window end your curtains **500mm** above the heater to ensure that the heat circulates into the room rather than rising up behind your curtains.



STEP 4 - MEASURE THE CURTAIN DROP

Curtain Track:

Measure from the top of the track to your chosen end point.

Curtain Pole with Eyelets:

Measure from the top of the pole to your chosen end point.

Curtain Pole with Single Pleat Curtains

Use the curtain rings that come in the pole pack. Measure from just below the pole, as this is where your curtains will hang after you've put the hooks into the loops on the curtain rings.

